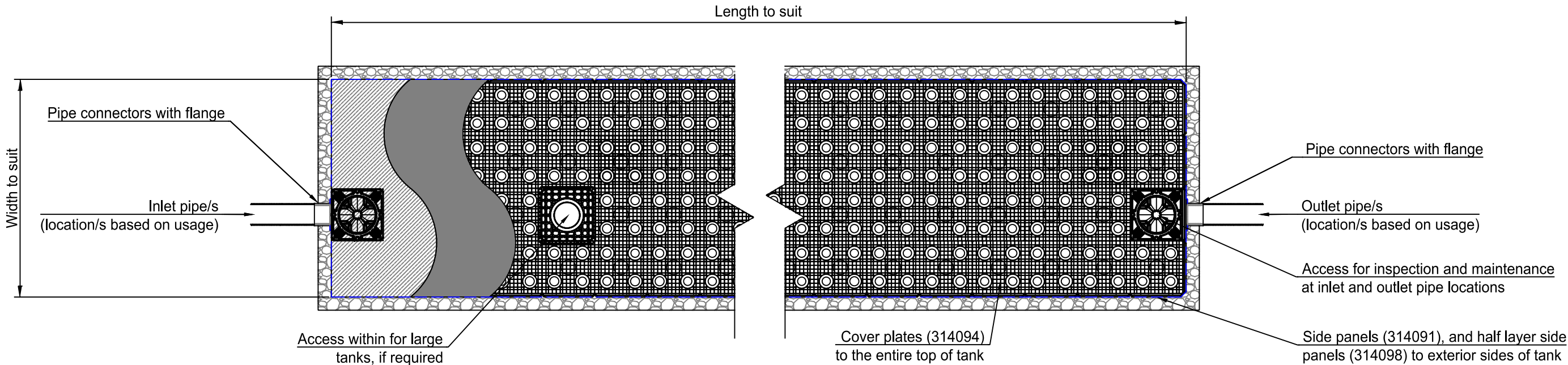
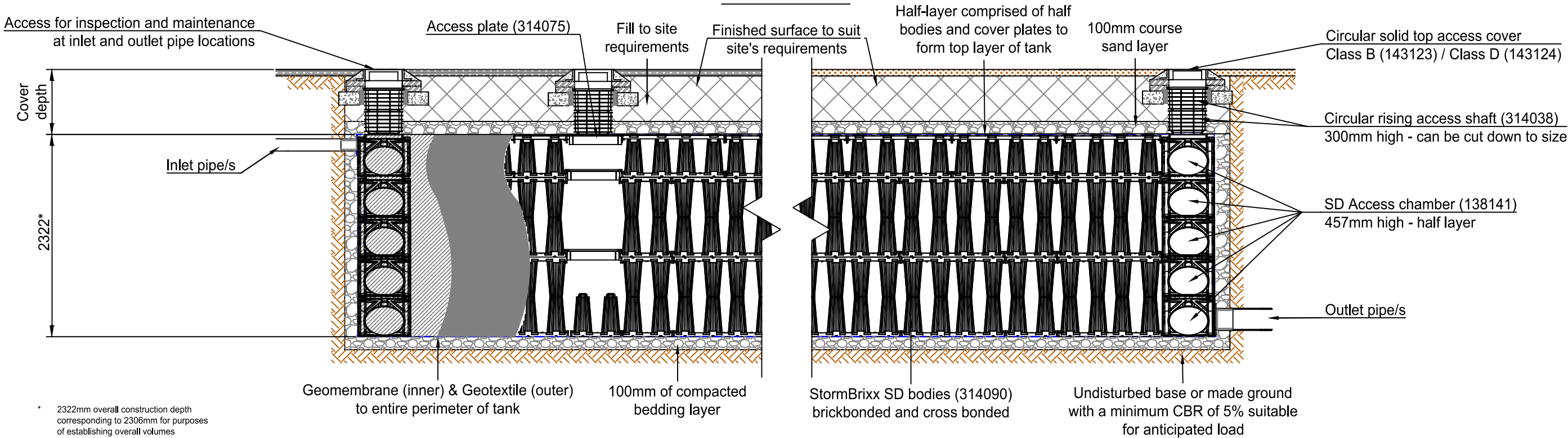


Notes:  
For vent options, refer to drawing STX-SD-VENT  
For tank access options, refer to drawing STX-SD-ACCESS


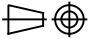
Plan



Elevation



\* 2322mm overall construction depth corresponding to 2306mm for purposes of establishing overall volumes

Typical cover depths <sup>(1)</sup> over the top of ACO StormBrixx SD		(1) Assumed 27° load distribution angle through fill material and overlaying surface asphalt or block paving  (2) Typical cover depth to avoid accidental damage from gardening/landscaping work  (3) Occasional trafficking by refuse collection or similar vehicles (typically one per week)  (4) Typical cover depth is a guide, for shallower cover depth, please consult ACO or assess with ACO's online Structural Calculator.	Version	Date	Description	Name
Location	Typical cover depth (m) <sup>(4)</sup>		 ACO Pty Ltd	Head Office 134 - 140 Old Bathurst Road Emu Plains NSW 2750 Australia  Tel: +61 2 4747 4000 www.acoaus.com.au sales@acoaus.com.au	Drawing Number: STX-SD-2.5-D	Revision:
Non-Trafficked areas <sup>(2)</sup> i.e landscaping	0.5 <sup>(4)</sup>				Title: <b>ACO StormBrixx SD Detention/Retention 2.5 Layer Tank Installation Detail Drawing</b>	
Car parks, vehicles up to 2500kg gross mass	0.6 <sup>(4)</sup>					
Car parks, occasional vehicles greater than 2500kg <sup>(3)</sup> mass	Please consult ACO <sup>(4)</sup>					
Occasional HGV traffic up to 44000kg GVW (HA loading)	Please consult ACO <sup>(4)</sup>		Created by: K.S	Released by: D.C	Projection: ISO-A 	Units: mm
			Created at: Aug 2025	Released at: Aug 2025	Information contained in this drawing is copyright property of ACO Pty Ltd. Any reproduction in part or whole without written permission of ACO Pty Ltd is prohibited	
			Replacement for: -	Replaced by: -		
						Format: A3
						Scale: 1 : 50
						Sheet: 1 of 1