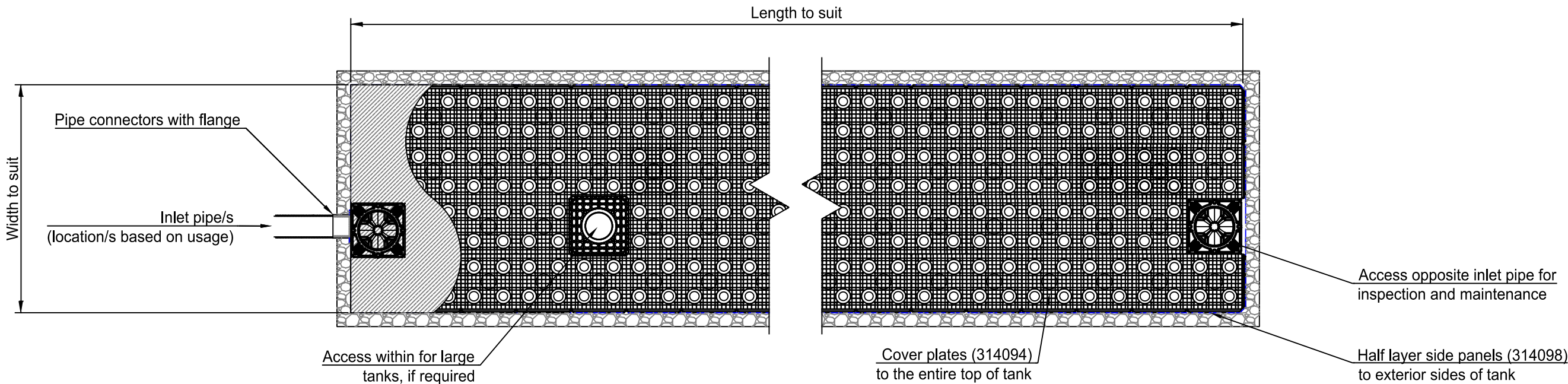
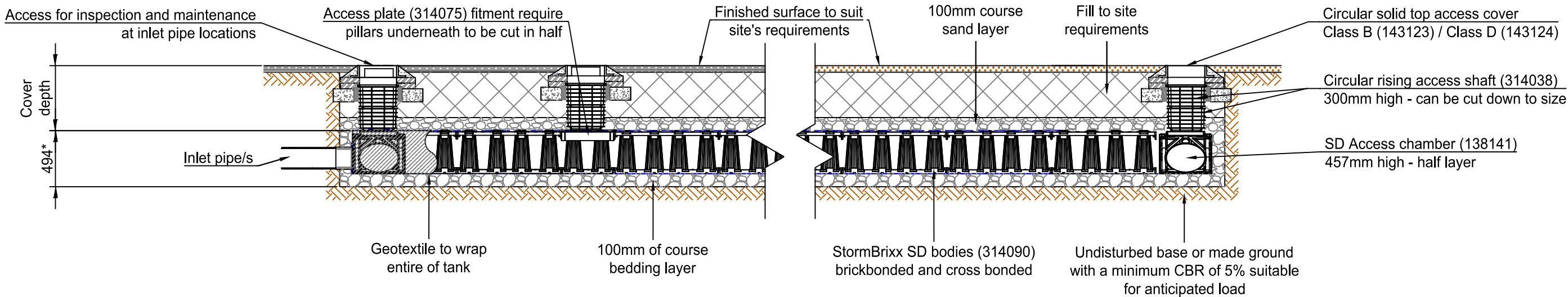


Notes:
For vent options, refer to drawing STX-SD-VENT
For tank access options, refer to drawing STX-SD-ACCESS


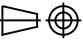
Plan



Elevation



* 494mm overall construction depth corresponding to 478mm for purposes of establishing overall volumes

Typical cover depths ⁽¹⁾ over the top of ACO StormBrixx SD		(1) Assumed 27° load distribution angle through fill material and overlaying surface asphalt or block paving (2) Typical cover depth to avoid accidental damage from gardening/landscaping work (3) Occasional trafficking by refuse collection or similar vehicles (typically one per week) (4) Typical cover depth is a guide, for shallower cover depth, please consult ACO or assess with ACO's online Structural Calculator.	Version	Date	Description	Name
Location	Typical cover depth (m) ⁽⁴⁾		 ACO Pty Ltd	Head Office 134 - 140 Old Bathurst Road Emu Plains NSW 2750 Australia Tel: +61 2 4747 4000 www.acoaus.com.au sales@acoaus.com.au	Drawing Number: STX-SD-0.5-I	Revision:
Non-Trafficked areas ⁽²⁾ i.e landscaping	0.5 ⁽⁴⁾				Title: ACO StormBrixx SD Infiltration 0.5 Layer Tank Installation Detail Drawing	
Car parks, vehicles up to 2500kg gross mass	0.6 ⁽⁴⁾					
Car parks, occasional vehicles greater than 2500kg ⁽³⁾ mass	Please consult ACO ⁽⁴⁾					
Occasional HGV traffic up to 44000kg GVW (HA loading)	Please consult ACO ⁽⁴⁾		Created by: K.S	Released by: D.C	Projection: ISO-A 	Units: mm
			Created at: Aug 2025	Released at: Aug 2025	Information contained in this drawing is copyright property of ACO Pty Ltd. Any reproduction in part or whole without written permission of ACO Pty Ltd is prohibited	Format: A3
			Replacement for: -	Replaced by: -		Scale: 1 : 50
						Sheet: 1 of 1