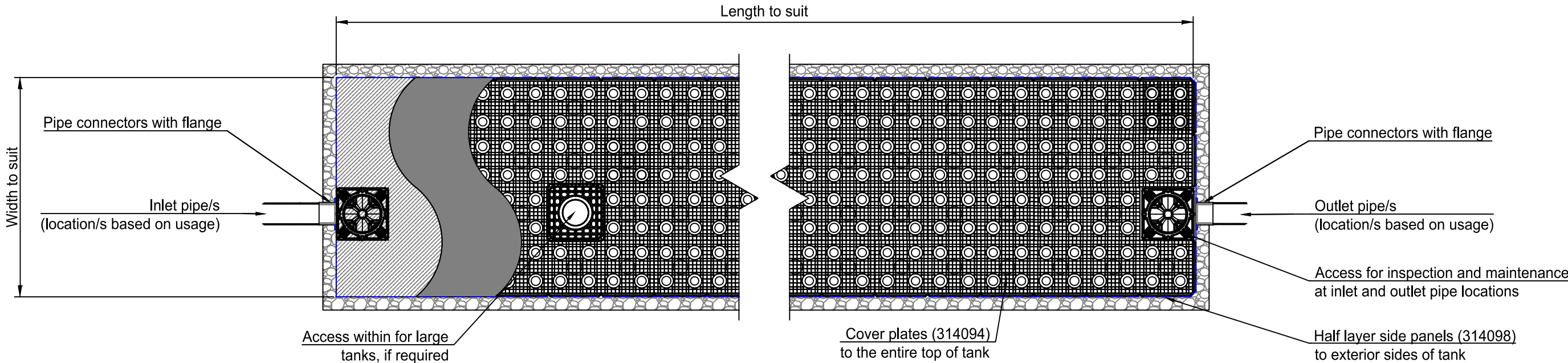
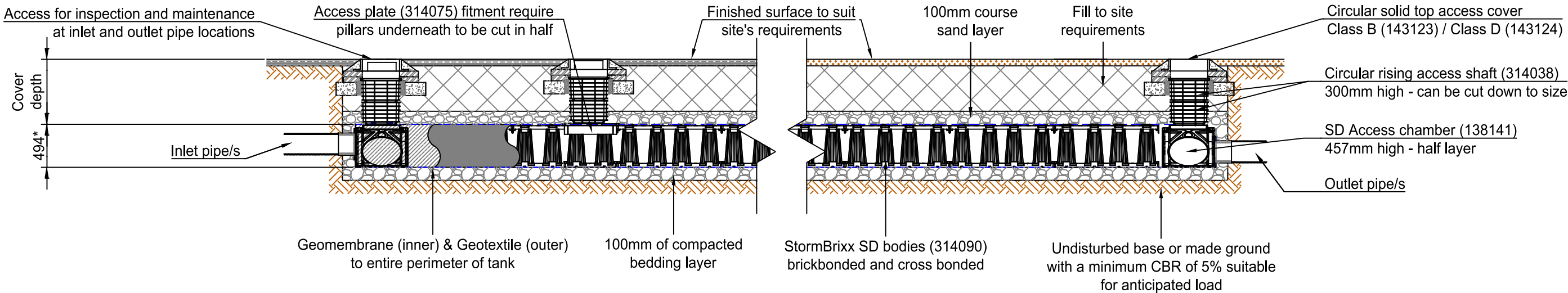


Notes:  
For vent options, refer to drawing STX-SD-VENT  
For tank access options, refer to drawing STX-SD-ACCESS


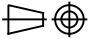
Plan



Elevation



\* 494mm overall construction depth corresponding to 478mm for purposes of establishing overall volumes

Typical cover depths <sup>(1)</sup> over the top of ACO StormBrixx SD		(1) Assumed 27° load distribution angle through fill material and overlaying surface asphalt or block paving  (2) Typical cover depth to avoid accidental damage from gardening/landscaping work  (3) Occasional trafficking by refuse collection or similar vehicles (typically one per week)  (4) Typical cover depth is a guide, for shallower cover depth, please consult ACO or assess with ACO's online Structural Calculator.	Version	Date	Description	Name
Location	Typical cover depth (m) <sup>(4)</sup>		 ACO Pty Ltd	Head Office 134 - 140 Old Bathurst Road Emu Plains NSW 2750 Australia  Tel: +61 2 4747 4000 www.acoaus.com.au sales@acoaus.com.au	Drawing Number: STX-SD-0.5-D	Revision:
Non-Trafficked areas <sup>(2)</sup> i.e landscaping	0.5 <sup>(4)</sup>				Title: <b>ACO StormBrixx SD Detention/Retention 0.5 Layer Tank Installation Detail Drawing</b>	
Car parks, vehicles up to 2500kg gross mass	0.6 <sup>(4)</sup>				Projection: ISO-A 	Units: mm
Car parks, occasional vehicles greater than 2500kg <sup>(3)</sup> mass	Please consult ACO <sup>(4)</sup>				Created by: K.S	Released by: D.C
Occasional HGV traffic up to 44000kg GVW (HA loading)	Please consult ACO <sup>(4)</sup>		Created at: Aug 2025	Released at: Aug 2025	Information contained in this drawing is copyright property of ACO Pty Ltd. Any reproduction in part or whole without written permission of ACO Pty Ltd is prohibited	Format: A3
			Replacement for: -	Replaced by: -		Scale: 1 : 50
						Sheet: 1 of 1