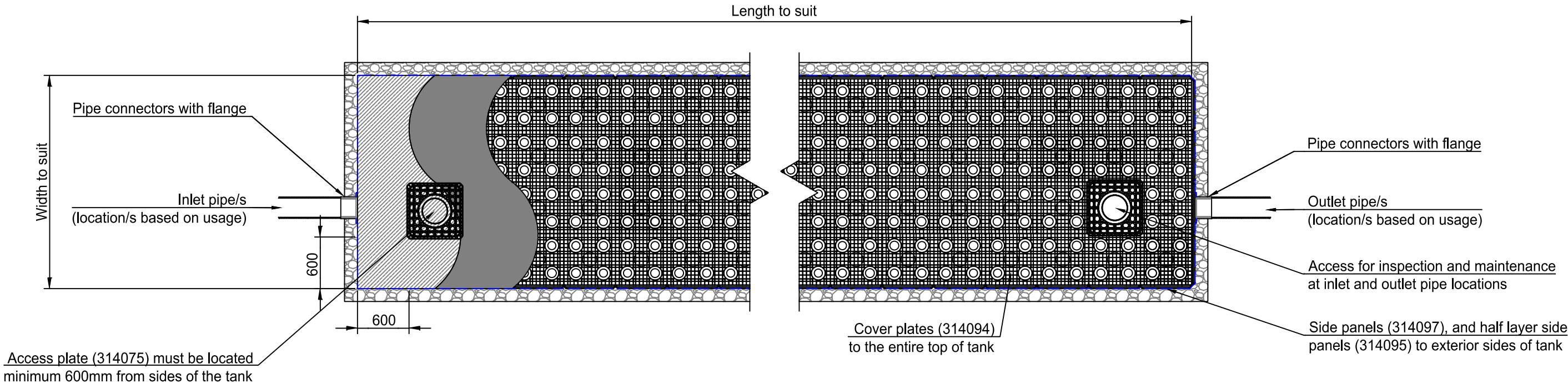
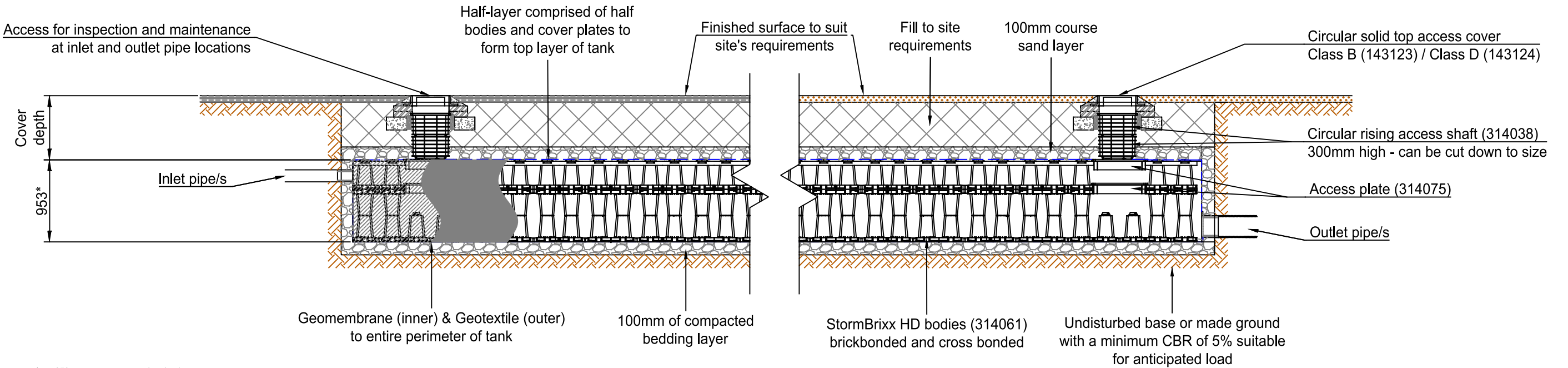


Notes:
For vent options, refer to drawing STX-HD-VENT
For tank access options, refer to drawing STX-HD-ACCESS



Plan



Elevation



* 953mm overall construction depth corresponding to 915mm for purposes of establishing overall volumes

Typical cover depths ⁽¹⁾ over the top of ACO StormBrixx HD		(1) Assumed 27° load distribution angle through fill material and overlaying surface asphalt or block paving							
Location	Typical cover depth (m) ⁽⁴⁾		Version	Date	Description			Name	
Non-Trafficked areas ⁽²⁾ i.e landscaping	0.5 ⁽⁴⁾		 ACO Pty Ltd	Head Office 134 - 140 Old Bathurst Road Emu Plains NSW 2750 Australia Tel: +61 2 4747 4000 www.acoaus.com.au sales@acoaus.com.au	Drawing Number: STX-HD-1.5-D			Revision:	
Car parks, vehicles up to 2500kg gross mass	0.6 ⁽⁴⁾				Title: ACO StormBrixx HD Detention/Retention 1.5 Layer Tank Installation Detail Drawing				
Car parks, occasional vehicles greater than 2500kg ⁽³⁾ mass	0.8 ⁽⁴⁾								
Occasional HGV traffic up to 44000kg GVW (HA loading)	Please consult ACO ⁽⁴⁾				Created by: K.S	Released by: D.C	Projection: ISO-A 		Units: mm
		Created at: Aug 2025	Released at: Aug 2025				Scale: 1 : 50		
		Replacement for: -	Replaced by: -	Information contained in this drawing is copyright property of ACO Pty Ltd. Any reproduction in part or whole without written permission of ACO Pty Ltd is prohibited			Sheet: 1 of 1		