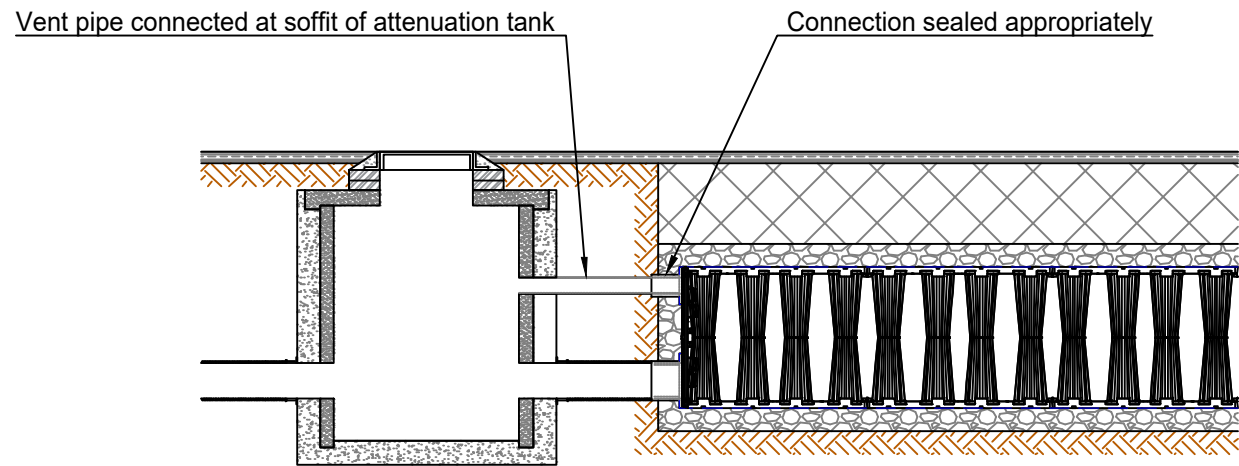
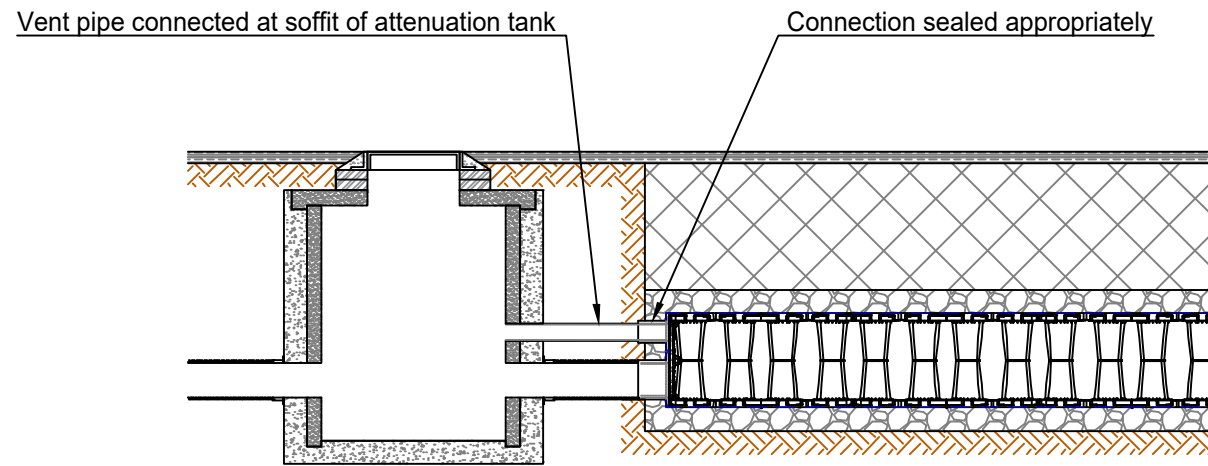


Vent Returning to Manhole

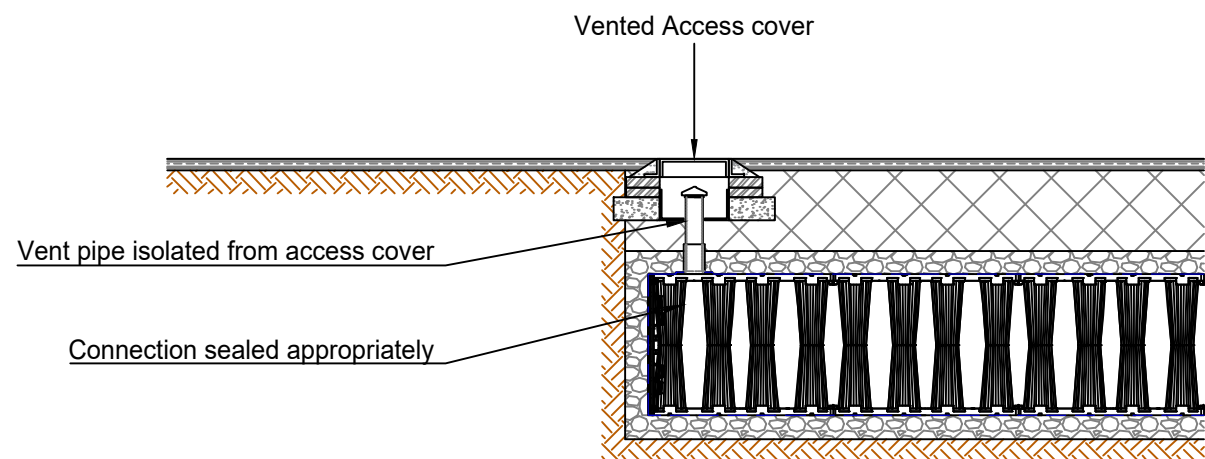


StormBrixx SD

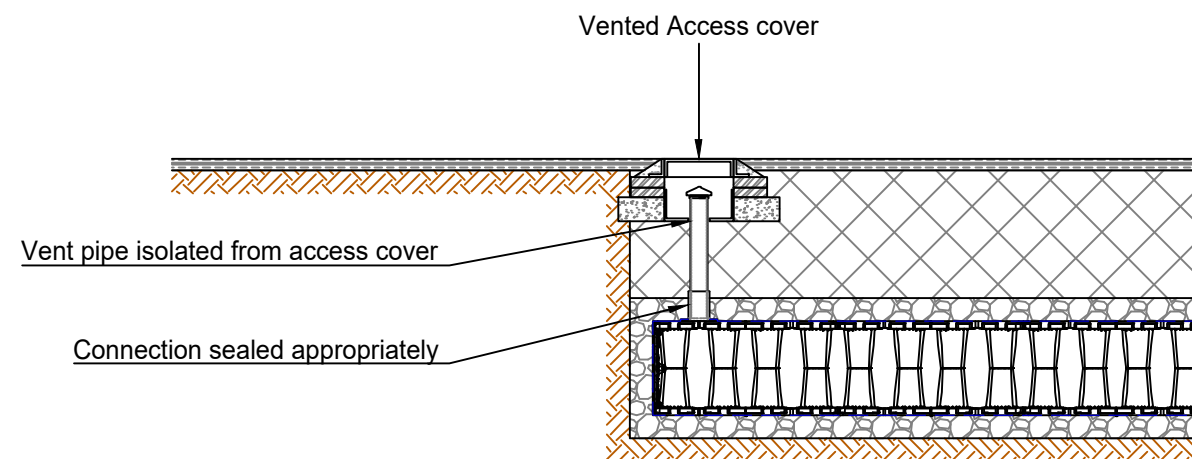


StormBrixx HD

Vertical Vent



StormBrixx SD



StormBrixx HD

Minimum cover depths ⁽¹⁾ over the top of ACO StormBrixx		
Location	HD ⁽²⁾	SD
Non-Trafficked areas i.e landscaping	0.5 ⁽³⁾	Consult ACO
Car parks, vehicles up to 2500kg gross mass	0.6	Consult ACO
Car parks, occasional vehicles greater than 2500kg ⁽⁴⁾ mass	0.75	Consult ACO
Occasional HGV traffic up to 44000kg GVW (HA loading)	Consult ACO	Consult ACO

- (1) Assumed 27° load distribution angle through fill material and overlaying surface asphalt or block paving
- (2) Please check minimum frost check cover depths for geographical location
- (3) Minimum cover depth to avoid accidental damage from gardening/landscaping work
- (4) Occasional trafficking by refuse collection or similar vehicles (typically one per week)

A	25/10/17	Initial Issue	P.J
Version	Date	Description	Name
ACO Technologies plc ACO Business Park Hitchin Road Shefford Bedfordshire SG17 5TE, UK Tel: 01462 816666 www.aco.co.uk		Drawing Number: 23767	Revision: A
		ACO StormBrixx Typical Vent Detail Installation Detail Drawing	
Created by: P.J	Released by: L.D	Projection: ISO-A	Units: mm
Created at: 25/10/17	Released at: 25/10/17		Format: A3
Replacement for: -	Replaced by: -		Scale: 1 : 30
Information contained in this drawing is copyright property of ACO Technologies plc. Any reproduction in part or whole without written permission of ACO Technologies plc is prohibited			Sheet: 1 of 1