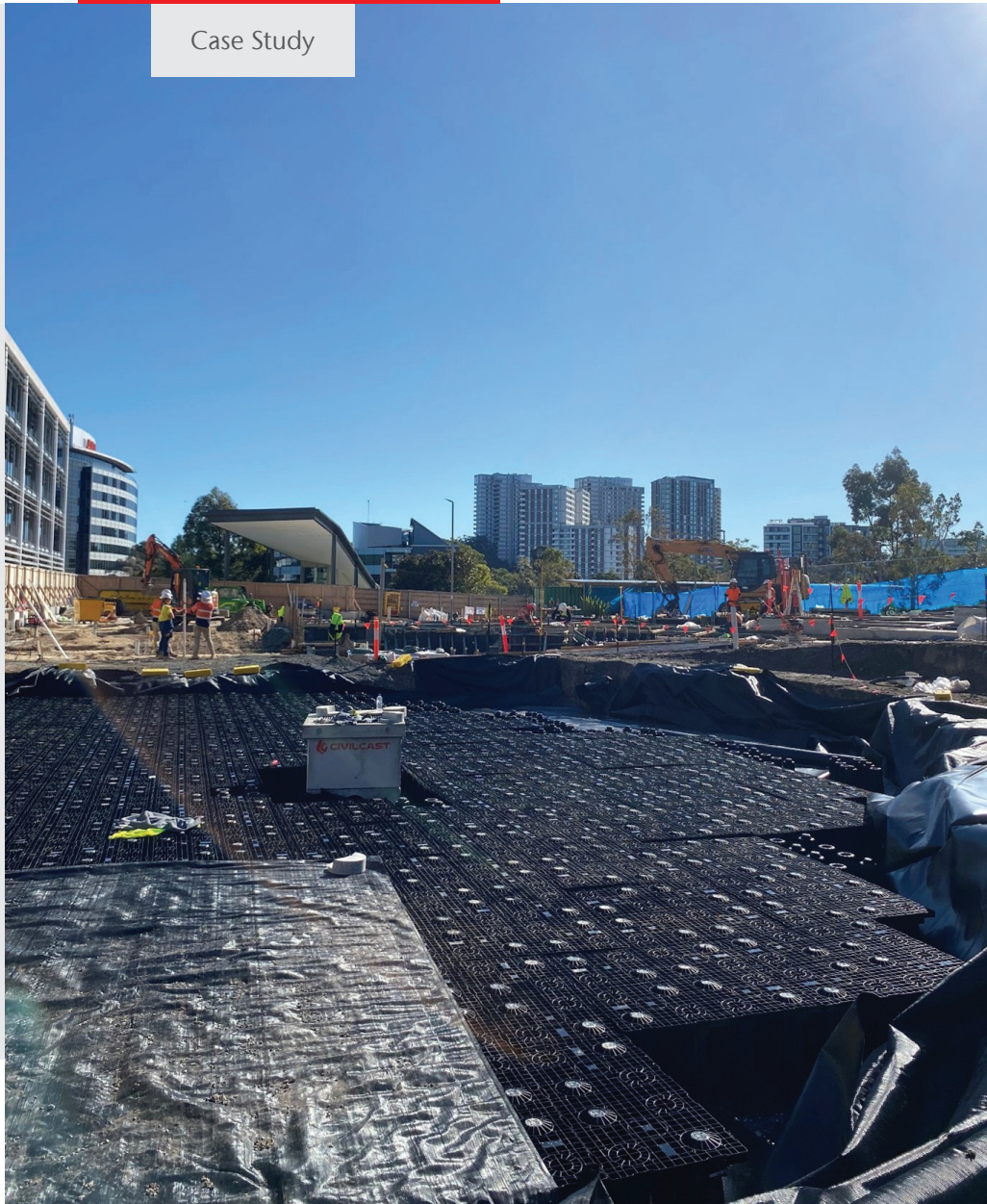


ACO StormBrixx® SD

Case Study



Optus Pavilion - Macquarie Park NSW

Optus is a leading Australian telecommunications company headquartered in Macquarie Park, Sydney. Owned by the Singaporean telecommunications provider Singtel, Optus is the second-largest telecommunications company in Australia. Its mobile network covers approximately 98.5% of the Australian population. As part of its ongoing growth strategy, Optus is expanding its presence at its Macquarie Park headquarters with the development of a new facility known as the Optus Pavilion.

Project Design Brief

Designers were tasked with integrating a comprehensive stormwater management system to effectively mitigate and detain runoff generated from multiple site-specific catchment areas. The system required a shallow tank to connect to existing stormwater pipes, and versatile enough to be assembled into an irregular shape to fit within the landscaped area. In addition, the tank had to be designed to allow runoff to infiltrate into the top of the tank from the sandy turf above.

ACO's Solution

- **StormBrixx® SD** – 120m³ geocellular stormwater tank

Benefits

- ACO **StormBrixx®** can be brickbonded and cross bonded to configure into irregular shapes to fit within confined spaces.
- Shallow 457mm deep StormBrixx® half layer tank avoids existing drainage infrastructure.
- The tank base and walls were wrapped with geomembrane for detention, and wrapped with a geotextile on the top of the tank for infiltration from the grass turf above.

Other ACO products used

- Drainage systems - [ACO Drain®](#)

